



**Positioned for a Tier-1 Silver Discovery
in Bolivia's Prolific Mining Belt**

CORPORATE PRESENTATION

March 2026

TSX-V: BPAG

DISCLAIMER

FORWARD LOOKING STATEMENTS

Except for historical information contained herein, this presentation may contain forward looking statements including but not limited to comments regarding predictions and projections. Forward-looking statements address future events and conditions and therefore involve inherent risks and uncertainties. Although BP SILVER Corporation believes that such expectations are reasonable, there can be no assurance that such expectations will prove to be correct, and therefore actual results may differ materially from those currently anticipated in such statements. You are cautioned not to place undue reliance on any such forward looking statements, whether made in this presentation or in any question-and-answer period related to this presentation.

CORPORATE RESPONSIBILITY

BP Silver Corp. is committed to embrace the highest ethical standards and to act with uncompromising integrity as a responsible Bolivian mineral exploration company. Our goal is to act in accordance with modernized international norms that embody CSR principles to make a positive impact on our local communities through safe employee practices, environmental stewardship, and open communication. We are committed to working closely with our local communities and their leaders to pursue mutually beneficial economic rewards through our CSR agreements. We are firm believers that good corporate citizenship is the right thing to do as well as a prerequisite and cornerstone for long-term business success.

QUALIFIED PERSON

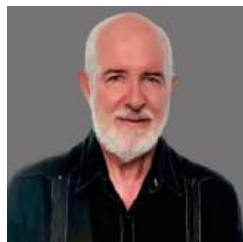
National Instrument 43-101 Dr. Stewart Redwood, Ph.D., Director of the Company, and a Qualified Person as defined by National Instrument 43-101, has approved the scientific and technical information concerning the Company discussed in this presentation.

STRATEGIC LEADERSHIP DRIVING SHAREHOLDER VALUE



Timothy Shearcroft
CEO, FOUNDER & DIRECTOR

Mr. Shearcroft is the founder of multiple private mineral exploration companies in Latin America, bringing over 20 years of business experience and a strong passion for discovery. He is actively involved in all aspects of exploration, from project acquisition to building strategic networks, and gained early exposure to the mining industry through his family's drilling business. Through his ventures and hands-on involvement, he demonstrates a strong work ethic and an enduring commitment to advancing the mining industry.



Dr. Stewart Redwood
DIRECTOR

Mr. Redwood is an economic geologist with over 30 years of mining and exploration experience, focused on Latin America. He has held leadership roles including Director of Bolivia's largest mining consultancy and Chief Geologist South America for AngloGold. He is a Fellow of the Institute of Materials, Minerals and Mining, the Geological Society of London, and the Society of Economic Geologists.



Harry Nijjar
CFO

Mr. Nijjar is a Managing Director of Malaspina Consultants Inc. and provides CFO and strategic financial advisory services to his clients across many industries. Mr. Nijjar is a CPA CMA and has a BCom from the University of British Columbia.



Keith Henderson
INDEPENDENT DIRECTOR

Mr. Henderson has over 30 years of mineral exploration experience across Africa, Europe, and the Americas. He has held senior roles with Anglo American plc and is currently President & CEO of Latin Metals Inc.



Gonzalo Lemuz
COO & FOUNDER

Mr. Lemuz, a Bolivian exploration geologist, brings 30 years of international experience across the Americas, Eastern Europe, and the Middle East. He is co-founder of Roxwell Minera and President of Emisur Minera S.A. and has held advisory and leadership roles with several mineral exploration companies.



Robert McMorran
INDEPENDENT DIRECTOR

Mr. McMorran, a CPA, CA, has over 35 years of mining industry experience. He founded Malaspina Consultants and has held board and senior management roles with companies including Santacruz Silver, Terra Ventures, Roxgold, and Canada Dominion Resources.



Dr. Mark Cruise
EXECUTIVE CHAIRMAN

Mr. Cruise has over 30 years of international mining including as a polymetallic specialist with Anglo American plc. He co-founded and led several billion-dollar exploration and mining companies, and most recently served as COO and CEO of New Pacific Metals, overseeing two +200Moz silver discoveries in Bolivia.



Arturo Préstamo Elizondo
ADVISOR

Mr. Préstamo Elizondo, a major shareholder of BP Silver, has over 20 years of executive and operational experience in the mining industry. He has held senior roles in corporate finance, planning, and investor relations, and is currently CEO and Executive Chairman of Santacruz Silver, which operates three producing mines, an ore feed sourcing company, and an exploration asset in Bolivia, as well as one producing mine in Mexico.

PROJECT PIPELINE IN UNDEREXPLORED WORLD-CLASS SILVER BELT

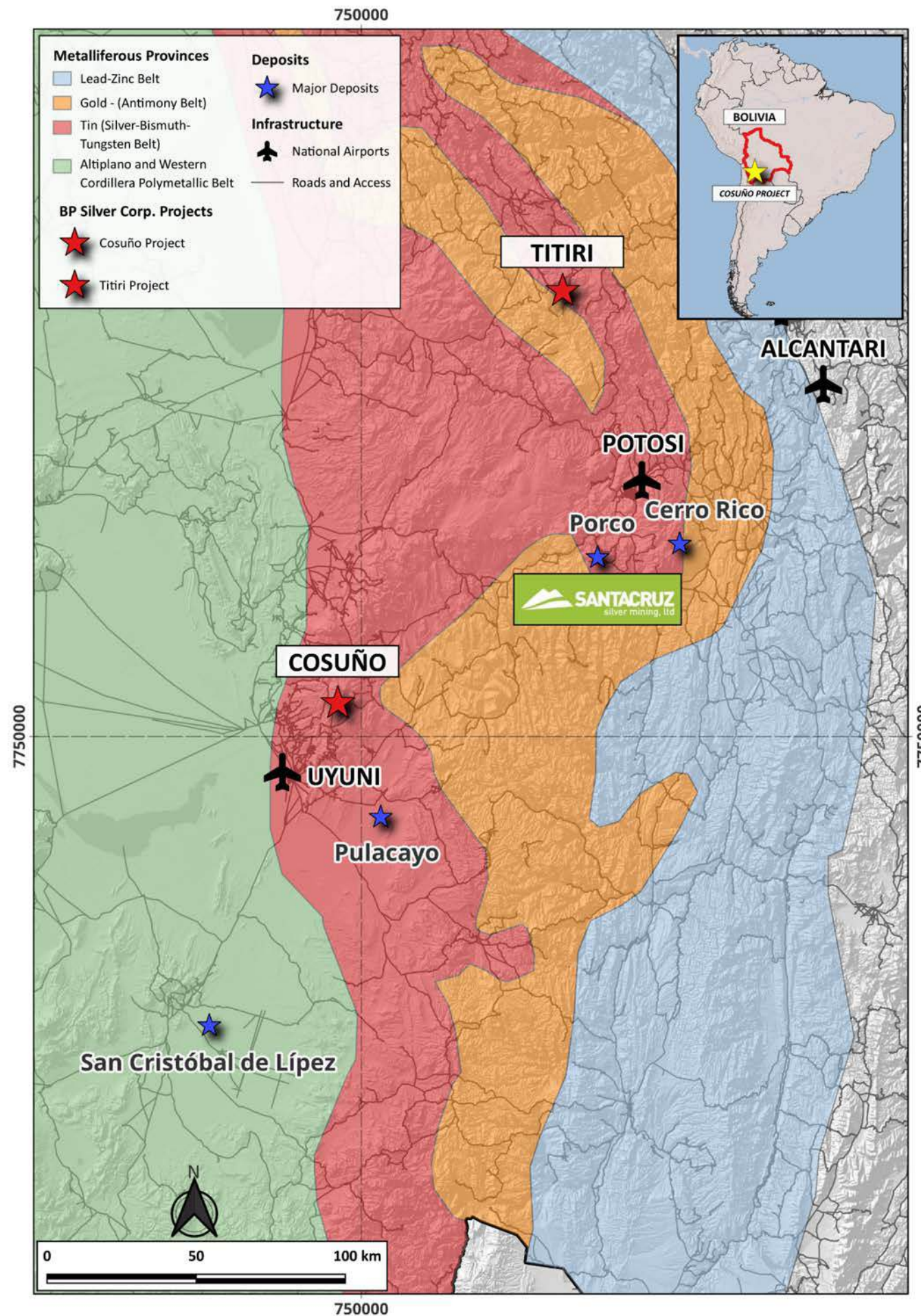
COSUÑO PROJECT – Phase 1 Drilling (Completed)

- ✓ Geological Analog to the +1Boz Cerro Rico Silver deposit; Mineralized Lithocap on surface (globally they are typically barren)
- ✓ Lithocap surface samples range up to 1035 g/t Ag. Additional anomalous grades of Lead, Bismuth, Zinc, Tin and Gold
- ✓ Phase I discovery drilling successfully intersected mineralization in all 4 targets ranging from broad zones of medium grade to narrower higher grades intervals:
- ✓ Highlights include:
 - 38 m @ 116 g/t Silver
 - Inc. 5m @ 600 g/t Silver
 - 29 m @ 75 g/t Silver Equivalent
- ✓ 5-year community agreement in place

TITIRI PROJECT

- ✓ Intersection of several major crustal-scale faults along which multiple deposits occur – high priority structural setting
- ✓ Outcropping mineralization historically explored by ASARCO
- ✓ 2.5km-long silver-lead-zinc zone, excellent historical trench results, never drilled
- ✓ MOU in place with local communities

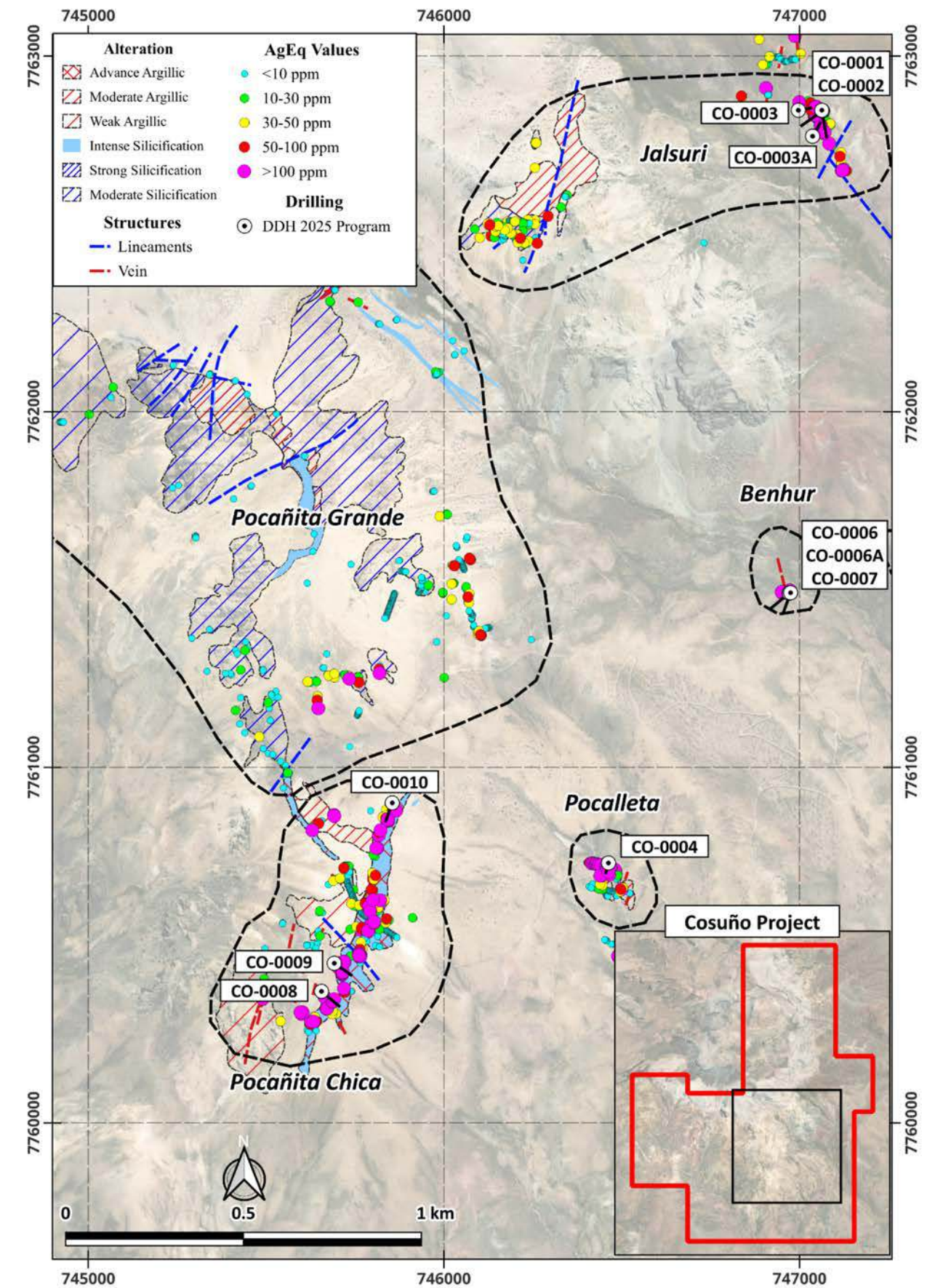
1. Please see news releases dated February 2, 2026 and February 27, 2026 for more information.
2. Please see news release dated December 17, 2025 for more information.



COSUÑO PROJECT

Silver System with Initial Drilling Confirming Silver-Gold Mineralization¹

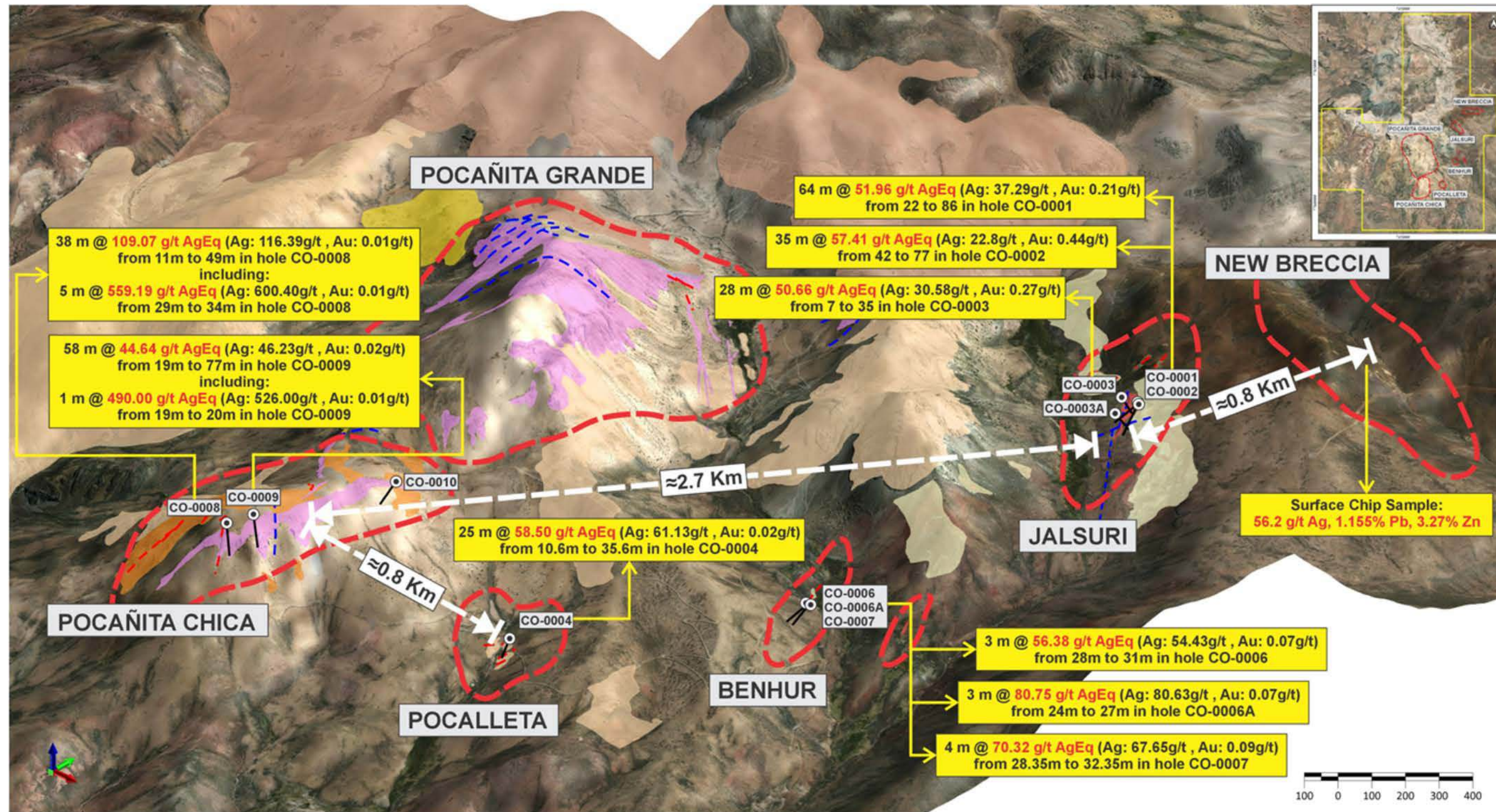
Phase 1 Drilling Nov-Dec 2025 ²	<ul style="list-style-type: none"> • First-ever drill program • 11 drill holes completed across 4 priority targets • Target Areas: Pocañita Chica, Pocañita Grande, Pocalleta, Jalsuri
Initial Results Feb 2026 ¹	<ul style="list-style-type: none"> • Highlight includes: <ul style="list-style-type: none"> • 38 m @ 116 g/t Silver, Inc. 5 m @ 600 g/t Silver • Gold values of 0.2 – 1.0 g/t Gold
Next Steps	<ul style="list-style-type: none"> • Geophysical Program • Advancing toward a Phase 2 drill program <ul style="list-style-type: none"> • Targeting mid-2026, subject to results
Same Prolific Mineralized Belt	<ul style="list-style-type: none"> • Cerro Rico: 3.7 B oz Ag; • San Cristóbal: 706 M oz Ag; • Pulacayo: 640 M oz Ag



2025 Drill Targets and AgEq Sampling Results at Cosuño

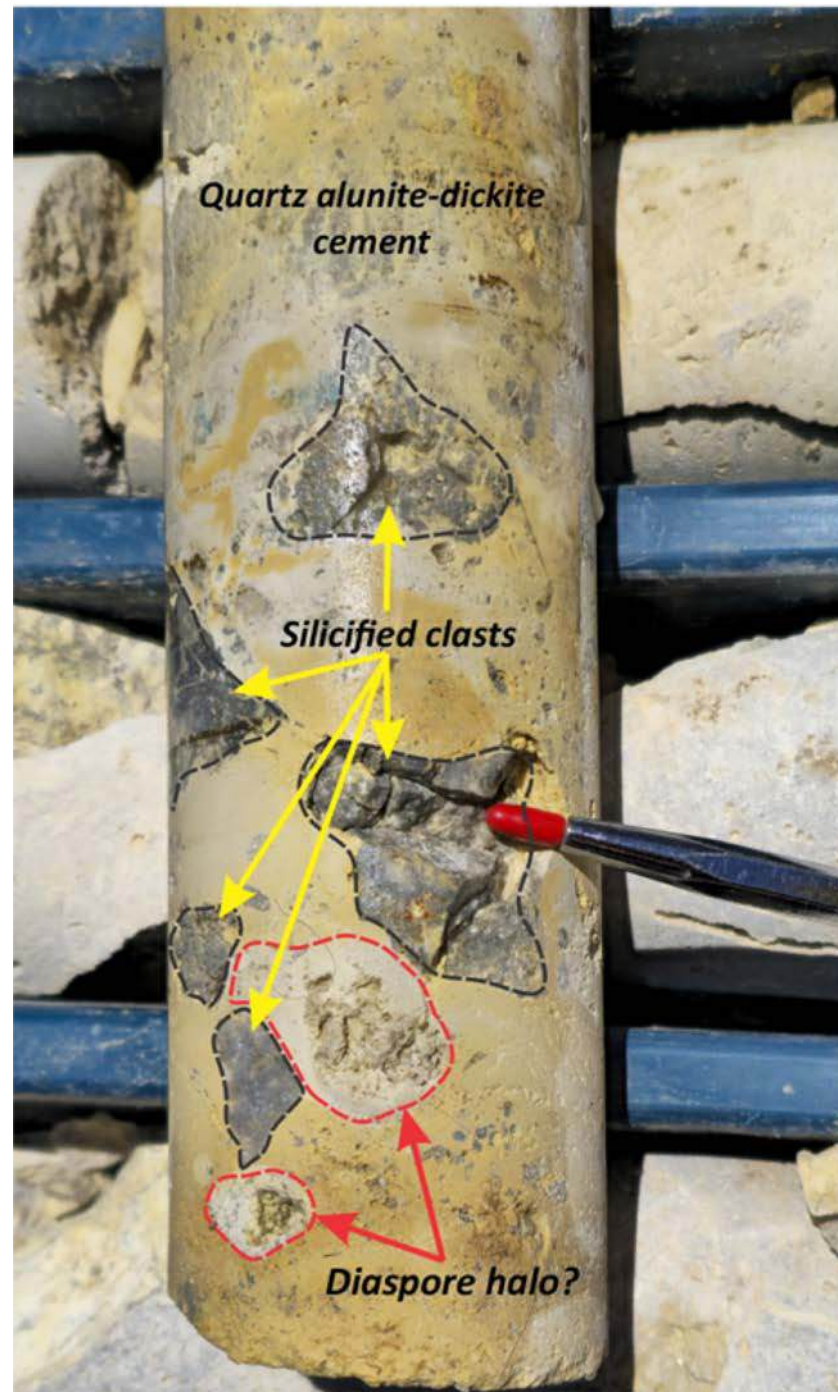
1. Please see news release dated December 17, 2025 for more information.
 2. Please see news releases dated February 2, 2026 and February 27, 2026 for more information.

COSUÑO 3D MAP: DRILLING HIGHLIGHTS, MINERALIZED TREND

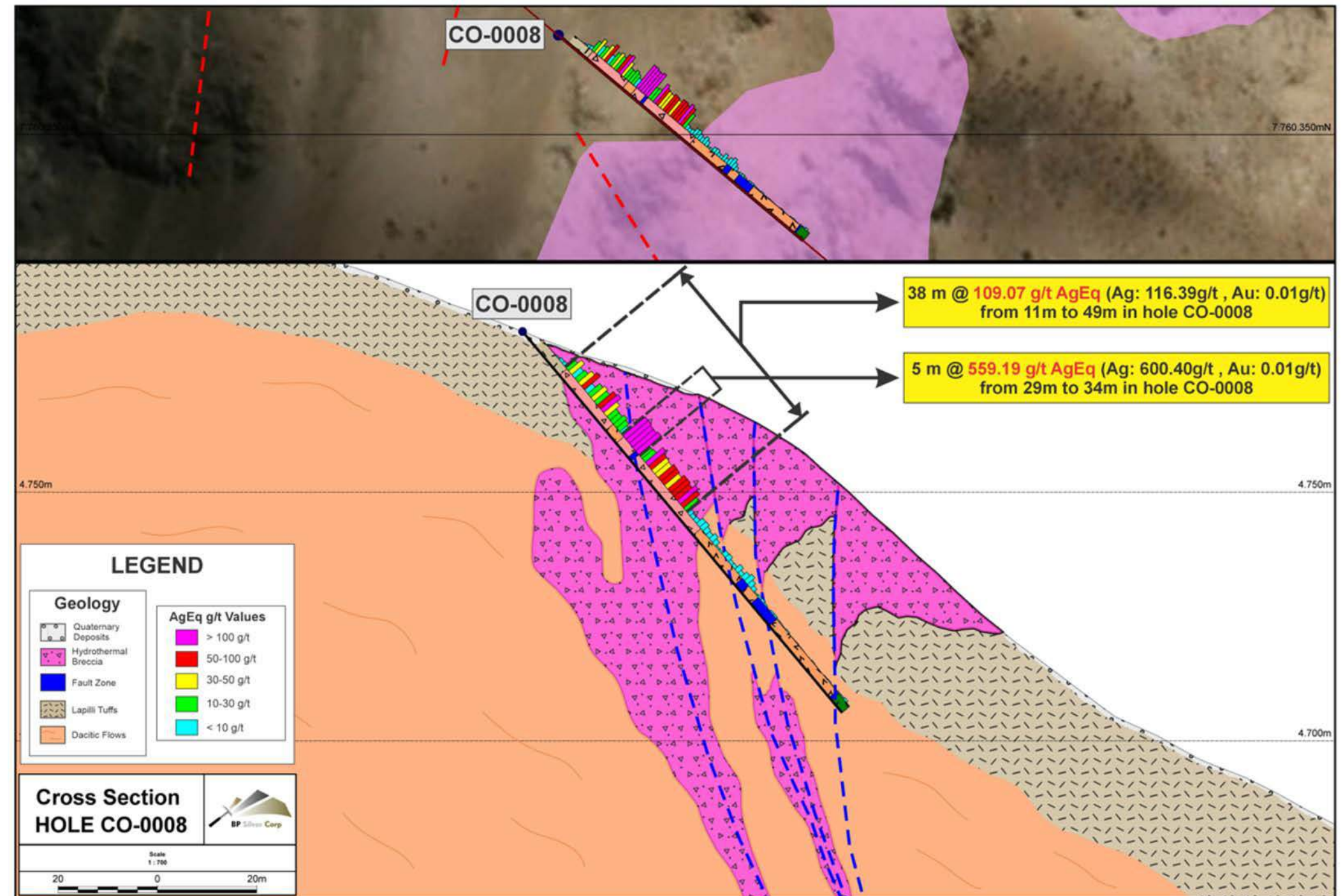


Cosuño mineralized corridor; demonstrating a multi-kilometer hydrothermal corridor with confirmed silver-dominant mineralization at several targets.

COSUÑO: PHASE 1 DRILL PROGRAM – CROSS SECTION PICANITA CHICA TARGET



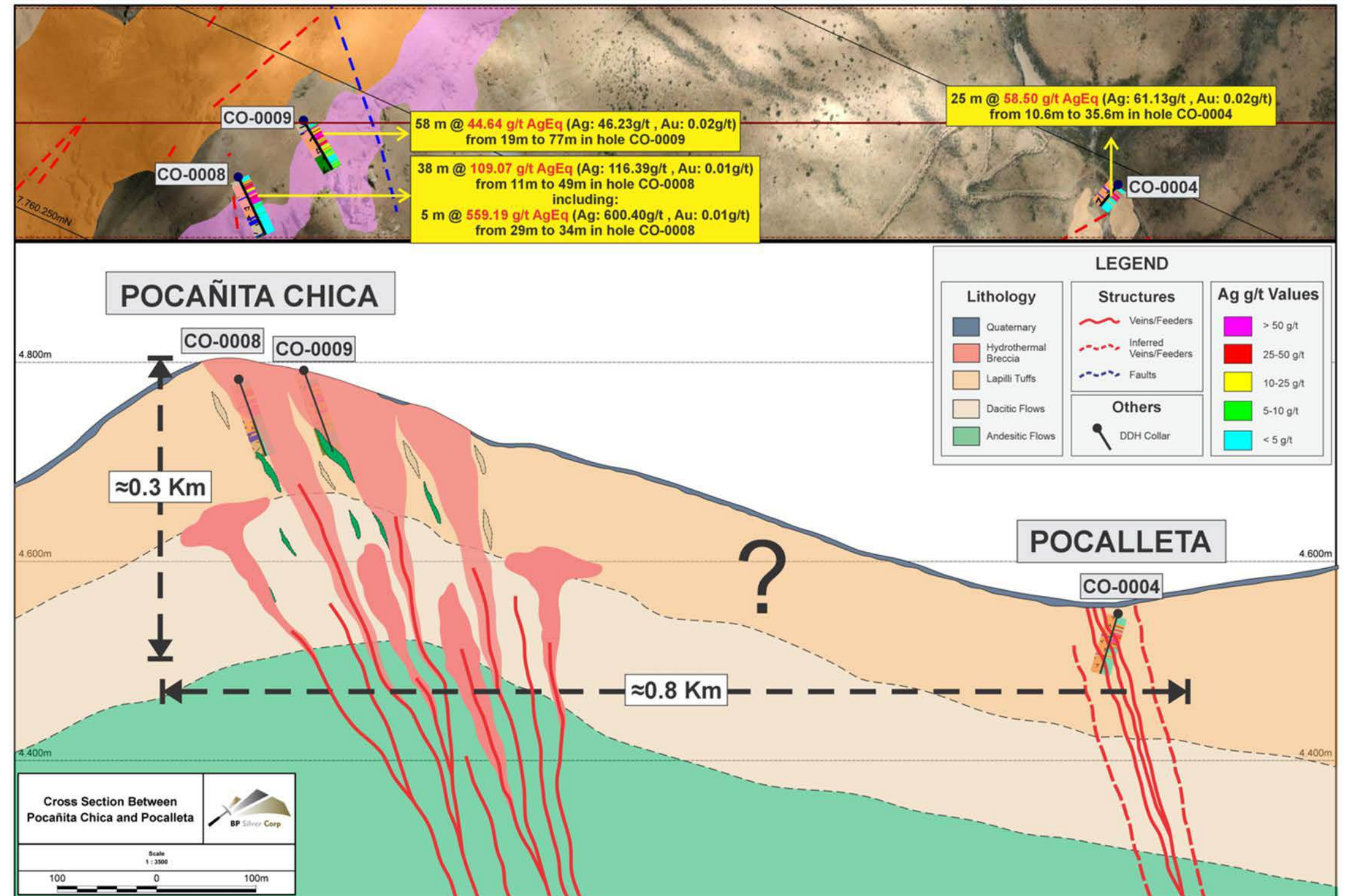
Hole CO-0008, From 30m to 31m, 1m @ 1655 g/t Ag
Matrix supported polymictic Hydrothermal Breccia with strong Advance Argillic Alteration and Ag Sulfosalts in fragments



Geological cross-section of the Pocañita Chica Target displaying interpreted structural controls on mineralization along the drill hole trajectory and the corresponding mineralized intercept in DDH CO-0008.

COSUÑO: CROSS SECTION ILLUSTRATING SCALE AND DEPTH POTENTIAL OF THE SYSTEM

- Drilling at **Pocañita Chica** and **Pocalleta** indicates ~300 m vertical separation and ~0.8 km lateral distance between targets.
- Geochemistry shows increasing copper, tin, and indium at lower elevations, suggesting strengthening base and critical-metal enrichment at depth.
- Results support a vertically developed polymetallic magmatic-hydrothermal system.



WHY BOLIVIA?

- 
Tier One Silver Belt With Strong Tier 1 Potential
 - Home to Cerro Rico, one of the world's largest Silver deposits, and numerous emerging large +200Moz silver discoveries.
- 
Underexplored Jurisdiction
 - Bolivian belts remain largely underexplored compared to neighboring countries such as Chile, Argentina, and Peru, despite having similar geology.
- 
Favorable Regulatory Environment
 - Bolivian mining regulations provide clear, robust mining regulations with predictable permitting timelines.
- 
Pro-Investment Political & Economic Climate
 - Since taking office in November 2025, President Rodrigo Paz is driving modernization, pro-mining policies, and economic reforms.
- 
Mining as an Economic Pillar
 - Cornerstone of Bolivia's economy and export base.
 - Strong national interest in sustaining and expanding mining investment.
- 
Foreign Investment Focus
 - Bolivian government actively seeking foreign investment to fuel the growth of the mining sector.
- 
Major Transactions
 - 2023 - Vancouver-based San Cristobal Mining acquired the largest mining operation in Bolivia, reflecting growing international confidence.
 - 2022 - Santacruz Mining acquired Glencore Assets for \$52M USD.
 - Andean Precious Metals Acquired Coeur Assets for \$188M USD.

COMPANIES OPERATING IN BOLIVIA

Supporting >C\$38.41 billion total valuation¹.

Company	Market Capital (C\$)
 PAN AMERICAN SILVER	\$34.15B
 ANDEAN PRECIOUS METALS	\$1.28B
 SANTACRUZ silver mining, ltd	\$1.24B
 New Pacific Metals	\$1.16B
 ELORO RESOURCES LTD.	\$274.43M
 SAN CRISTOBAL MINING	\$250M Acquisition
 PANTERA SILVER CORP.	\$40.67M
 CARTIERSILVER	\$17.32M

1. Average valuation as of March 6, 2026, and is based on the company's Canadian ticker. Also includes Cristobal Mining which is a private silver producer.

COSUÑO'S EXPLORATION ROADMAP

2023/2024

- Acquired ASTER data and interpretation
- QP site visit
- Re-sampling of historical work
- 43-101 report
- Detailed structural mapping and alteration analysis



2025

Phase 1 Drill Program (Nov-Dec) :

- Phase 1 proof-of-concept drilling: 11 diamond holes (906 m) completed
- Tested four structurally controlled, silver-rich polymetallic targets
- Located within a ~10.5 km² lithocap-hosted hydrothermal system comparable to major Bolivian silver districts



2026

Phase 1 Assay Results:

- 11 holes confirm near-surface silver-gold mineralization, highlighted by 38 m @ 116 g/t silver, inc. 5 m @ 600 g/t silver, inc. 1 m @ 1655 g/t silver

Phase II Drilling of Current and Newly Generated Targets

- Stage 1: Geophysics screening of the lithocap to test for extensions and geometry below cover
- Stage 2: Phase 2 Drilling



Hole #8: 5m @ 600 g/t Silver!



Jalsuri Target; 29m @ 75 g/t AqEq

DR. STEWART REDWOOD ON COSUÑO'S ASSAY RESULTS¹

Qualified Person and Director of BP Silver

*“Our recent drill program has delivered compelling high-grade silver results, highlighted by an intersection of 5 metres at 600.40 g/t silver and 1 meter grading 1,655.00 g/t silver — equivalent to an exceptional **1.65 kilograms of silver per tonne** over that interval. These results validate the discovery of a potentially economic deposit within the large 10.5 km² alteration zone that remains largely covered and only minimally tested, underscoring the significant exploration upside. The next phase of exploration will advance the project through extensive geophysical surveys to better define the size and continuity of the four drilled targets, refine Phase II drill planning, and identify additional targets concealed beneath thin surface cover, positioning the project for continued growth.”*

*“Cosuño is a 10.5 square kilometer zone of alteration. The Program tested **only four targets in the southern portion of Cosuño**, selected as initial targets because they were **outcropping**. We expect there to be **many more hidden targets as most of the area is covered by surficial overburden**. We are **literally scraping the surface with two short holes into this extensive system**, and it is **very significant that Cosuño's lithocap is mineralized as lithocaps are usually barren.**”*

“We expect Cosuño's grades to increase when we drill deeper into and below the lithocap. Lithocaps are extensive zones of clay and silica alteration that form in the top part of Bolivian polymetallic vein systems and tin porphyries, similar to those which overlie porphyry copper deposits.”

“The nearest neighbour to Cosuño, in a similar geological setting, the Pulacayo deposit, has a large lithocap that is barren and conceals a major vein that produced 640 million ounces of silver and 200,000 tons each of lead and zinc.”

*“The gold grades are higher than expected and over significant widths in the Jalsuri target. These results have achieved **one of the objectives of the Phase I drill program**, which was to confirm that the silver anomalies defined by surface rock sampling continue at depth.”*

1. Refer to news releases dated February 2, 2026 and February 27, 2026 for more information.

TITIRI PROJECT

- ✓ 100% owned, acquired through staking (4,900 hectares)
- ✓ Large untested mineralized footprint with high-grade silver and lead-zinc by-product. System remains open to expansion
- ✓ Open-pit exploration target of immediate interest
- ✓ **Historical ASARCO trench sampling highlights:**

Length	Silver (g/t)	Lead %	Zinc %
22m	141	0.35%	0.33%
18m	250	0.29%	0.22%
14m	478	0.65%	0.42%

- ✓ **Recent BP Silver Sampling:**
Mineralized samples range -
up to 1,380 g/t silver, averaging 240 g/t silver
up to 0.78% zinc, averaging 0.37% zinc
up to 0.64% lead, averaging 0.13% lead

- ✓ MOU signed with communities within this large project area
- ✓ Working with new Government to fast-track claims – Key Area is pending final approvals.



A) Barite, goethite



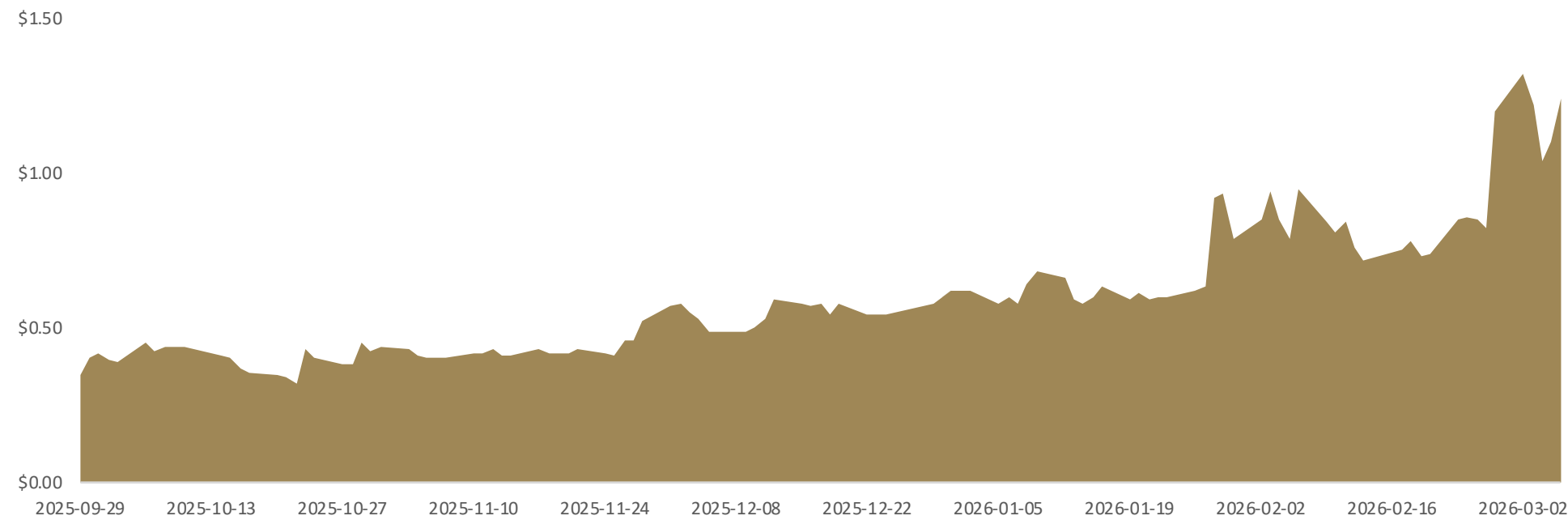
B) Scorodite, Mn oxide



C) Breccia, goethite cement, bleached sediment clasts

CAPITALIZATION OVERVIEW

Symbol “BPAG” Began Trading on the TSX-V on September 29, 2025



TSXV: BPAG As of 03/06/2026

Share Price	C\$1.24	Shares Outstanding	53,366,445 ¹
Market Cap	C\$66M	Warrants	10,422,590 ¹
Average Volume	205K	Options	3,590,000 ¹
52 Week High/Low	C\$1.45/C\$0.065	Fully Diluted	67,379,035 ¹

1. As of March 3, 2026.

SHARE OWNERSHIP*

Voluntary Lock-up (TSX-V Escrow Tier II Schedule) ¹	27%
HNW + Retail ²	34%
Director, Management, and Advisor ²	23%
Escrow – TSX-V, Tier II (Farstarcap Investment Corp – Release Schedule: 25% on QT Listing; 6, 12, 18 Months) ¹	5%
Retail (Formerly Farstarcap Investment Corp) ¹	5%
Funds / Family Office ²	6%

1. As of September 15, 2025

2. As of December 29, 2025

EARLY-STAGE SILVER OPPORTUNITY IN BOLIVIA

- 1** **Aligned Team & Local Support** with proven management, equity alignment, a 5-year community agreement, and access to a pipeline of projects with deep in-country expertise.
- 2** **Tier-1 Location** – Same prolific silver belt as Cerro Rico and San Cristóbal; mineralized lithocap at surface provides open-pit potential, with potential for a large underlying vein system comparable to Pulacayo (640 Moz Ag).
- 3** **Drill Validation with** Phase 1 (906 m across four high-priority targets) completed¹; Results confirm mineralization Ag-Au in Lithocap².
- 4** **High-Grade Multi-Metal System with** Drill Highlight of 38 m @ 116 g /t Silver inc. 5 m @ 600 g /t Silver. 29 m @ 75 g/t Silver Equivalent.
- 5** **Underexplored District with** three +200 Moz Ag discoveries since 2019; fully permitted.

1. Please see news release dated December 17, 2025 for more information.
2. Please see news releases dated February 2, 2026 and February 27, 2026 for more information.





CONTACT INFORMATION

Tim Shearcroft

CEO, Founder & Director

 Info@BPSilverCorp.com

 www.BPSilverCorp.com

 TSX-V: BPAG



TSX-V: BPAG

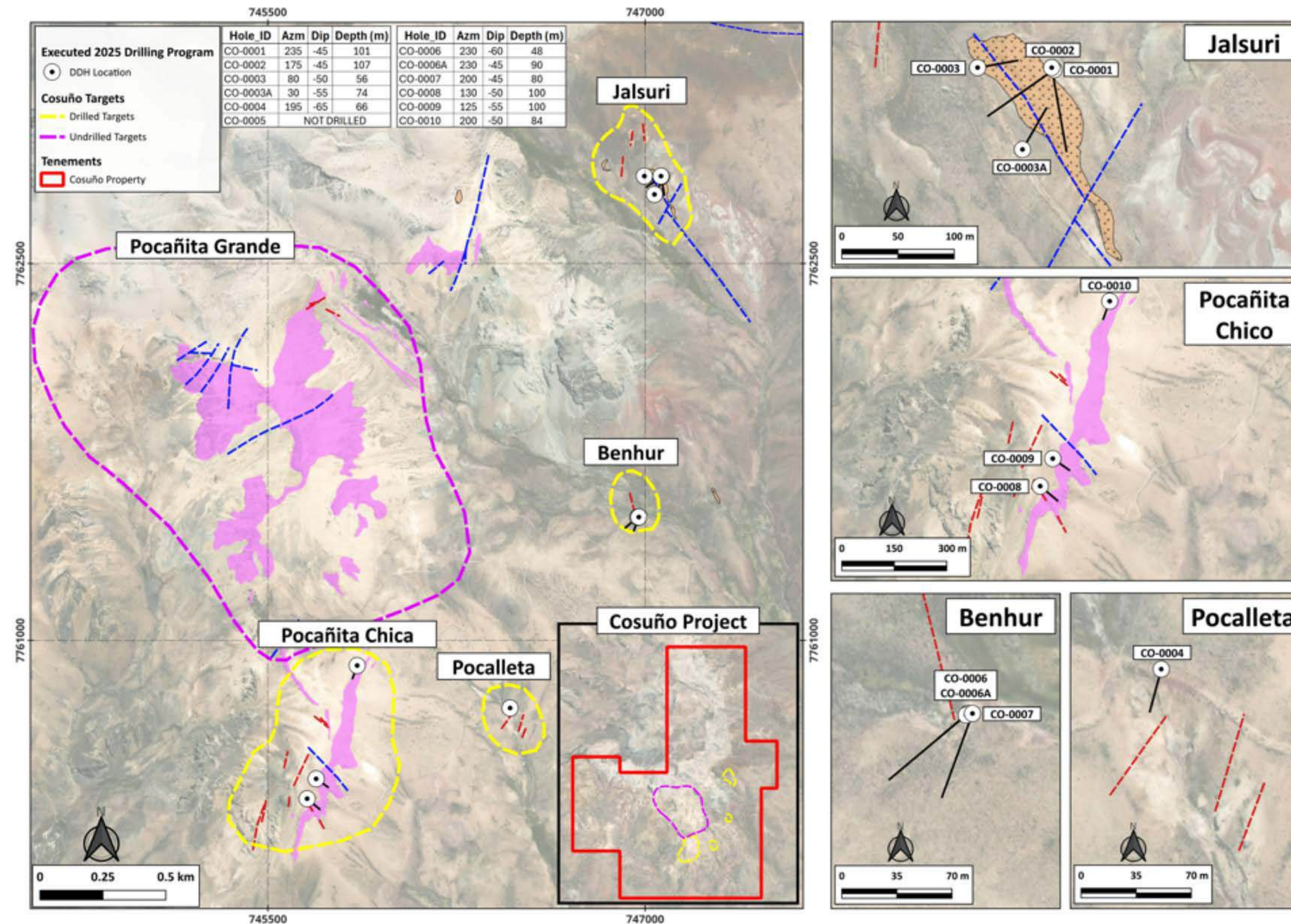


APPENDIX



COSUÑO: PHASE 1 DRILL PROGRAM

Completed on December 17, 2025 – Assays Released in February 2026



1. Refer to news release dated December 17, 2025, February 2, 2026, and February 26, 2026 for more information.

PHASE 1 DRILLING: SIGNIFICANT DRILL INTERSECTIONS

Phase 1 Drill Targets: Jalsuri, Benhur, Pocalleta, Pocañita Chica

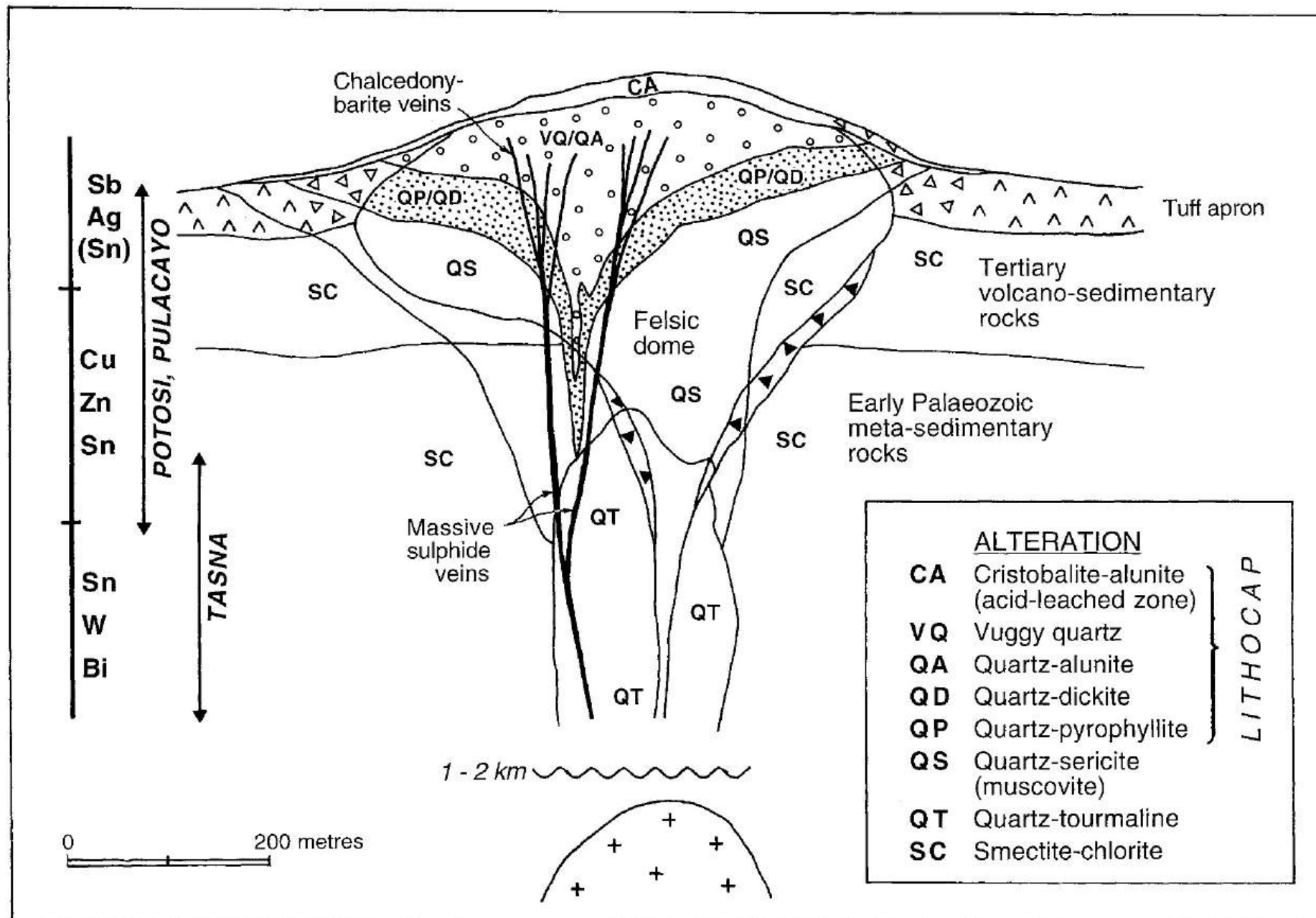
Hole No	Target	From m	To m	Interval m	Ag g/t	Au g/t	AgEq g/t
CO-0001	Jalsuri	22	86	64	37.29	0.21	51.96
inc.		35	64	29	56.03	0.28	75.15
inc.		35	40	5	97.72	0.39	122.97
And		48	51	3	129.93	0.47	159.51
CO-0002	Jalsuri	42	77	35	22.8	0.44	57.41
inc.		57	59	2	43.75	1.34	150.96
CO-0003	Jalsuri	7	35	28	30.58	0.27	50.66
inc.		14	20	6	47.70	0.58	92.09
inc.		30	33	3	57.30	0.37	83.74
inc.		32	33	1	105.00	0.59	146.20
CO-0003A	Jalsuri	14	57	43	20.40	0.15	31.32
inc.		14	27	13	34.28	0.16	45.05
inc.		33	46	13	25.17	0.18	38.22
CO-0004	Pocalleta	10.6	35.6	25	61.13	0.02	58.50
inc.		19.6	21.6	2	212.50	0.04	200.92
inc.		26.6	30.6	4	142.18	0.04	135.52
		42.6	47.6	5	56.64	0.02	54.32
inc.		45.6	46.6	1	243.00	0.07	231.75
CO-0006	Benhur	28	31	3	54.43	0.07	56.38
inc.		30	31	1	123.00	0.09	121.80
CO-0006A	Benhur	24	27	3	80.63	0.07	80.75
		43	46.2	3.2	63.29	0.03	61.33
CO-0007	Benhur	28.35	32.35	4	67.65	0.09	70.32
CO-0008	Pocanita Chica	11	49	38	116.39	0.01	109.07
inc.		29	34	5	600.40	0.01	559.19
inc.		30	31	1	1655.00	0.01	1539.97
CO-0009	Pocanita Chica	19	77	58	46.23	0.02	44.64
inc.		19	22	3	240.03	0.01	224.05
And		19	20	1	526.00	0.01	490.00
inc.		33	39	6	147.10	0.01	137.63

COSUÑO: PHASE 1 DRILL PROGRAM – SYSTEM POTNETIAL

- Silver occurs within a broader polymetallic mineral system.
- Associated metals include antimony, bismuth, copper, indium, lead, tin, and zinc.
- Metals are distributed within main mineralized zones and along margins, forming a complex zonation pattern.
- Current grades are generally modest; however, ongoing exploration and metallurgical studies may support potential by-product recovery.
- Metal concentrations may strengthen at depth, consistent with vertical zonation within the system.

Metal	Intersection	Hole	From (m)
Antimony	38.0 m at 0.18% Sb	CO-0008	11.0
	5.0 m at 0.17% Sb	CO-0009	33.0
Bismuth	38.0 m at 0.47% Bi	CO-0008	11.0
	inc. 5.0 m at 0.58% Bi	CO-0008	29.0
	inc. 1.0 m at 2.2% Bi	CO-0008	30.0
	49.0 m at 0.07% Bi	CO-0009	19.0
	inc. 3.0 m at 0.22% Bi	CO-0009	60.0
Copper	11.0 m at 0.10% Cu	CO-0004	19.6
Indium	15.0 m at 11.35 ppm In	CO-0004	6.6
Lead	13.0 m at 0.89% Pb	CO-0008	11.0
	inc. 1.0 m at 1.94% Pb	CO-0008	19.0
	10.0 m at 0.43% Pb	CO-0009	19.0
Tin	12.0 m at 0.13% Sn	CO-0008	38.0
	inc. 1.0 m at 1.45% Sn	CO-0008	46.0
	5.0 m at 0.018% Sn	CO-0009	19.0
Zinc	12.0 m at 0.51% Zn	CO-0001	89.0

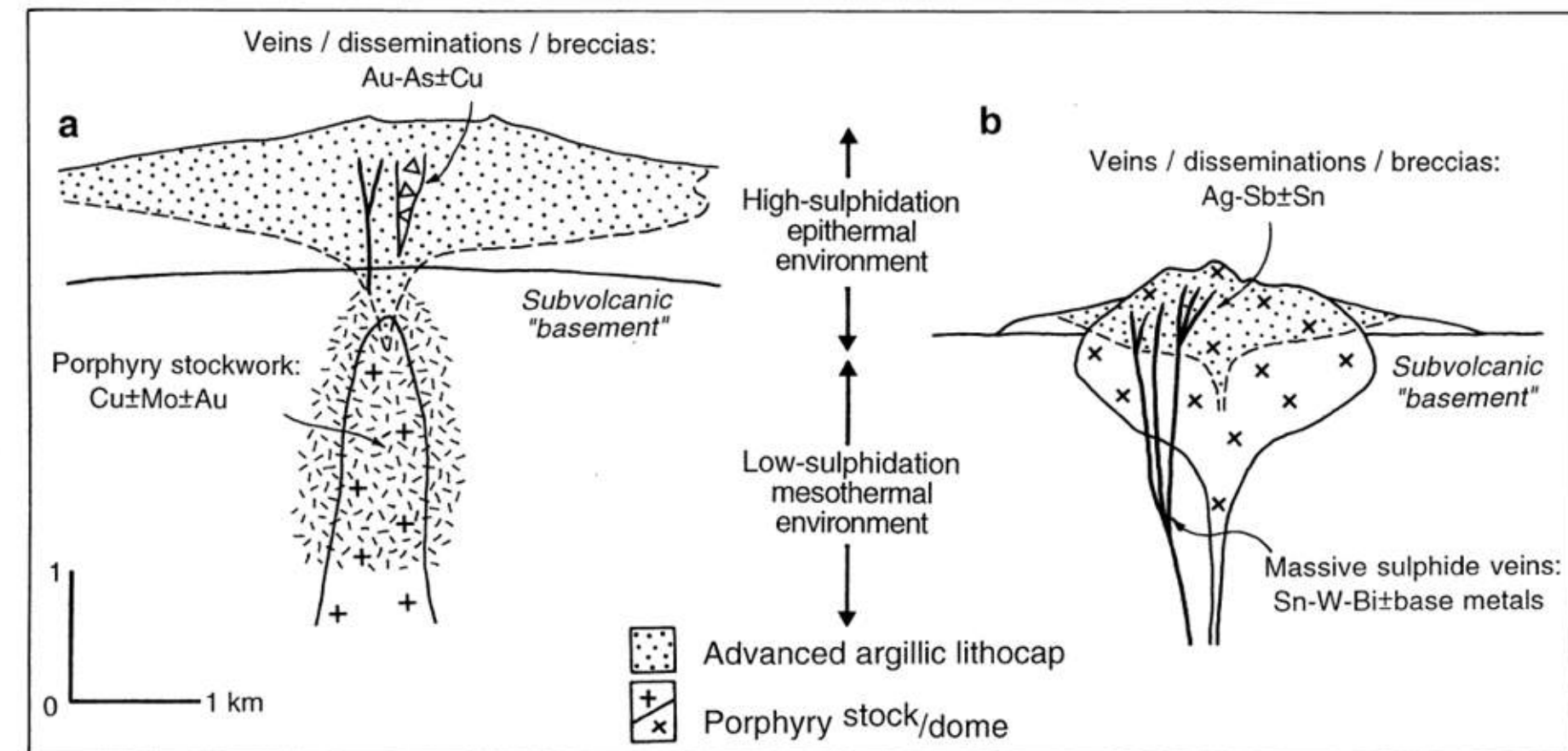
WHAT IS A LITHOCAP?



Bolivian Lithocap Model

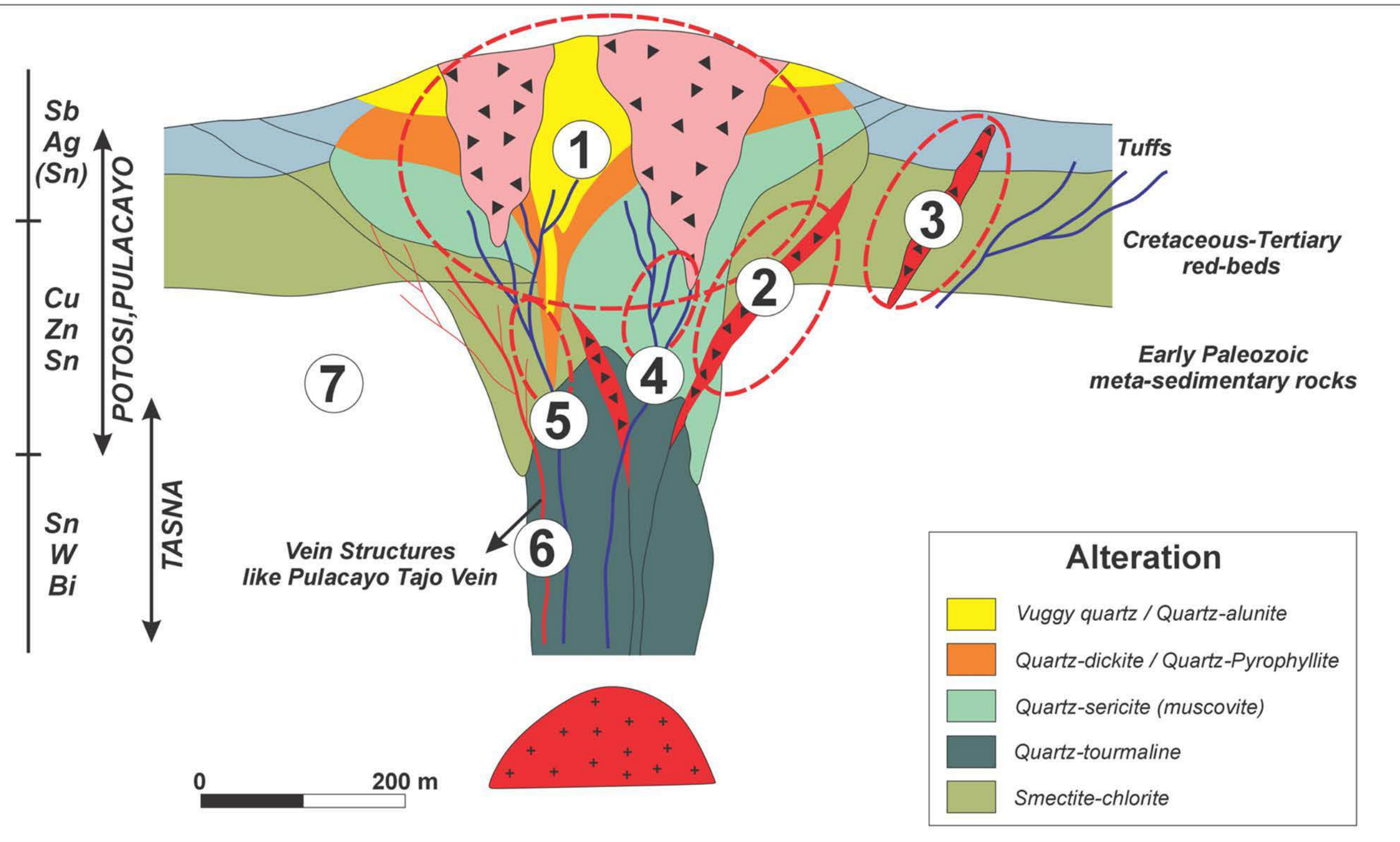
A lithocap is the extensive zone of alteration that overlies Ag-polymetallic vein deposits. The lithocap may be barren or may host epithermal Ag deposits.

It is similar to the alteration zone that overlies porphyry Cu deposits.



Sillitoe et al., 1998

COSUÑO SILVER TARGET MODEL



1. Disseminated and vein-style, bulk mineable Ag of High Sulphidation Epithermal Type in the Lithocap.
(Pocañita Chica and Grande Targets)

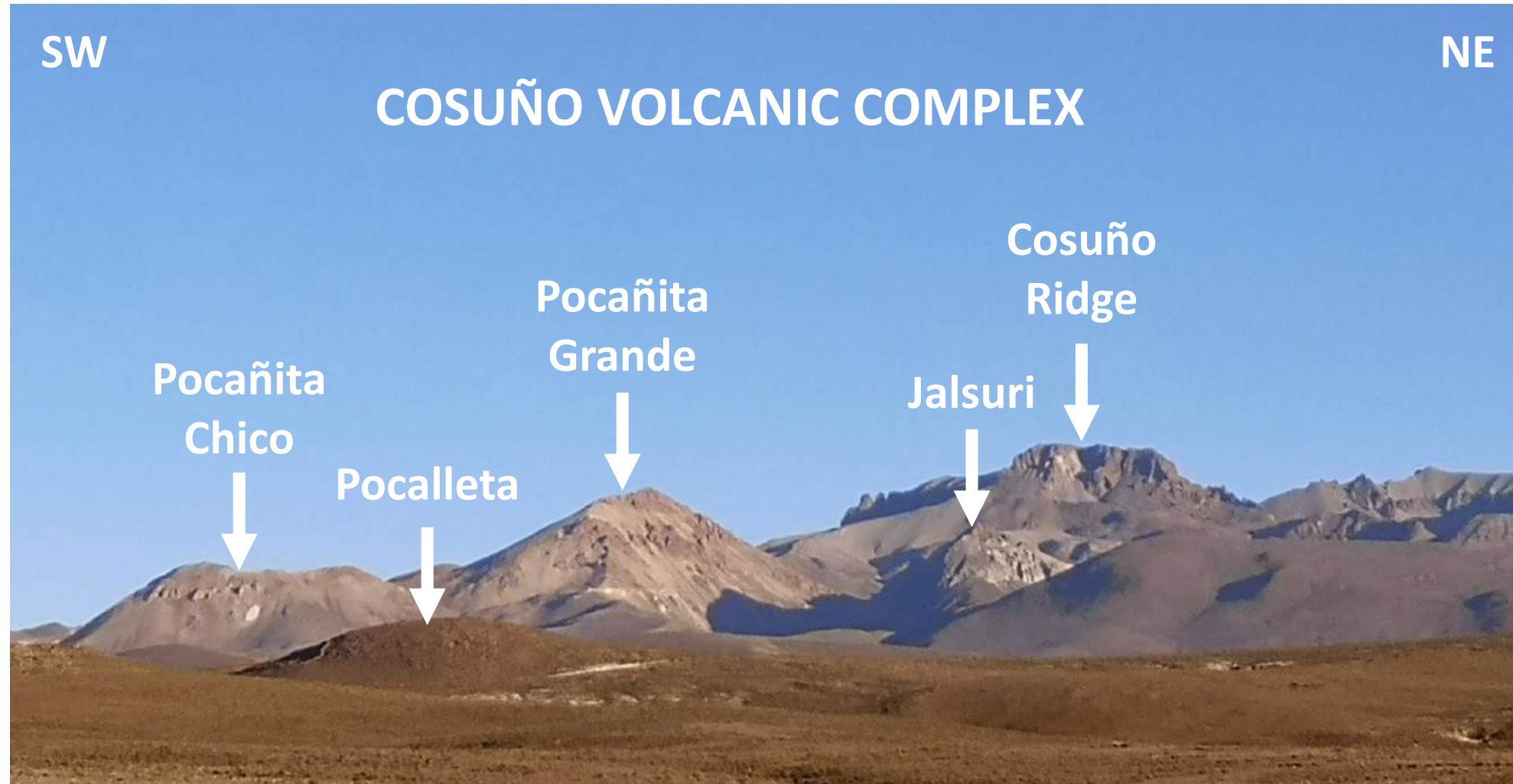
2 and 3. High grade Ag-Au breccias in the Lithocap.
(Jalsuri and New Breccia Targets)

4 and 5. High grade Ag+Polymetallic veins in the Lithocap.
(Benhur and Pocalleta Targets)

6. High grade Ag+Polymetallic veins in the Paleozoic sediments at Depth
(ex Tajo Vein, Pulacayo)

7. Replacement-style Ag-Polymetallic deposits in Cretaceous calcareous sediments below the volcanic rocks.

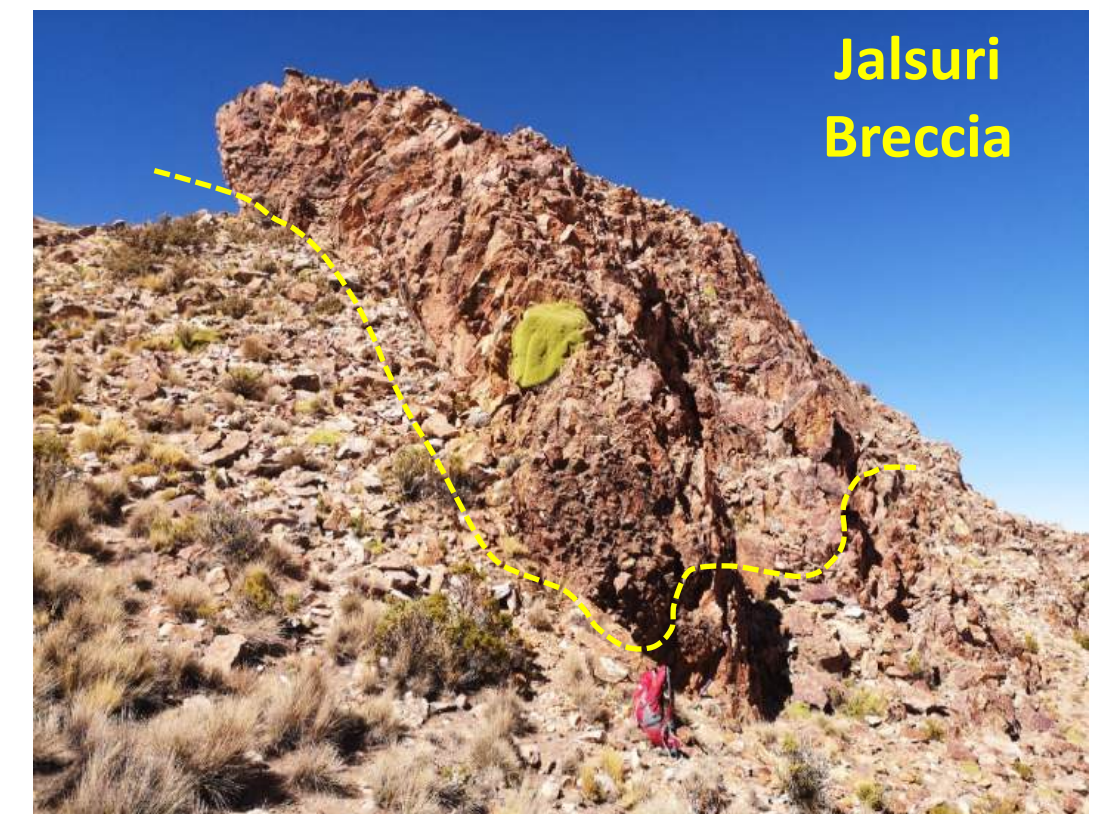
COSUÑO PROJECT



*Pocañita Chico and Pocañita Grande Volcanic Domes
With Advanced Argillic alteration and silver mineralization.*



Vuggy Silica in Pocañita Chico

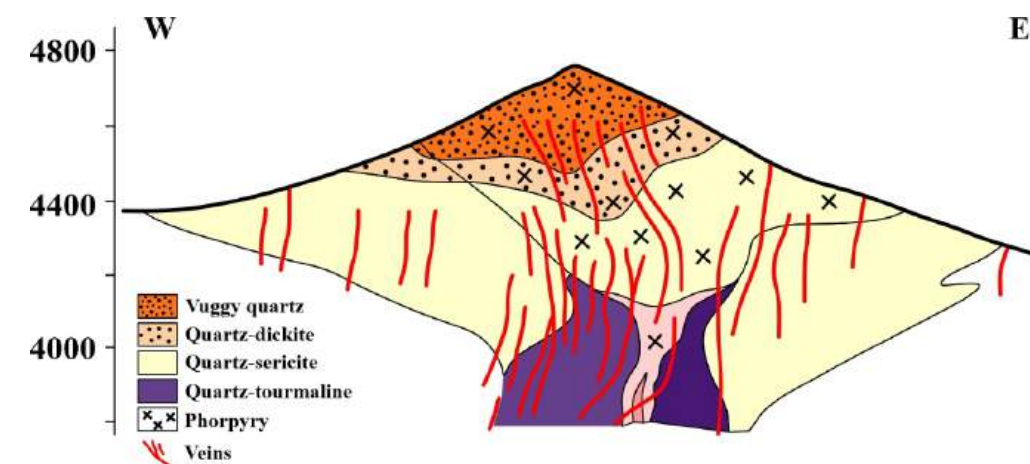


*Hydrothermal Breccia 40 meters wide and
200 meters along strike*

COSUÑO PROJECT

- ✓ **Walk-up drill targets** – never previously drill tested until December 2025
- ✓ Same major fault zone that controls the Pulacayo and San Cristobal deposits
- ✓ Large surface, mineralized lithocap - affinity to **Cerro Rico model**
- ✓ Potential for high grade silver vein or breccia body – affinity to **Pulacayo model**
- ✓ 5-year community agreement in place (to April 2028)
- ✓ **Drill permitting completed Q4 2023**
- ✓ Option agreement for **100%** (effective date September 2022)
 - 52% control position in property-holding corporate entity
 - Remaining 48% interest on payment of US\$2.3 million (Q3 2029)
 - US\$100K due September 2025 (PAID), US\$150K due September 2026, US\$350K due September 2028
- ✓ 2% NSR Royalty
 - 100% of NSR Royalty can be purchased for US\$2.5 million within 5 years from commencement of drilling and any time afterwards for US\$5 million.

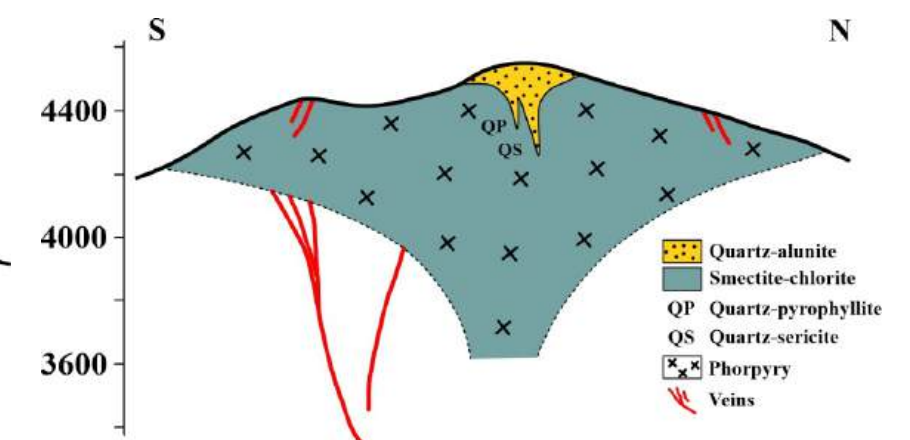
Cerro Rico Model



Cerro Rico lithocap: Silver deposit

- 541 Mt grading 102.6 g/t silver and 0.17% tin
- Containing 1,730 Moz of silver and up to 919,700 t of tin (Bernstein, 1989)
- Lithocap at Cosuño is mineralized and represents a drill target in itself

Pulacayo Model



Pulacayo lithocap: Barren

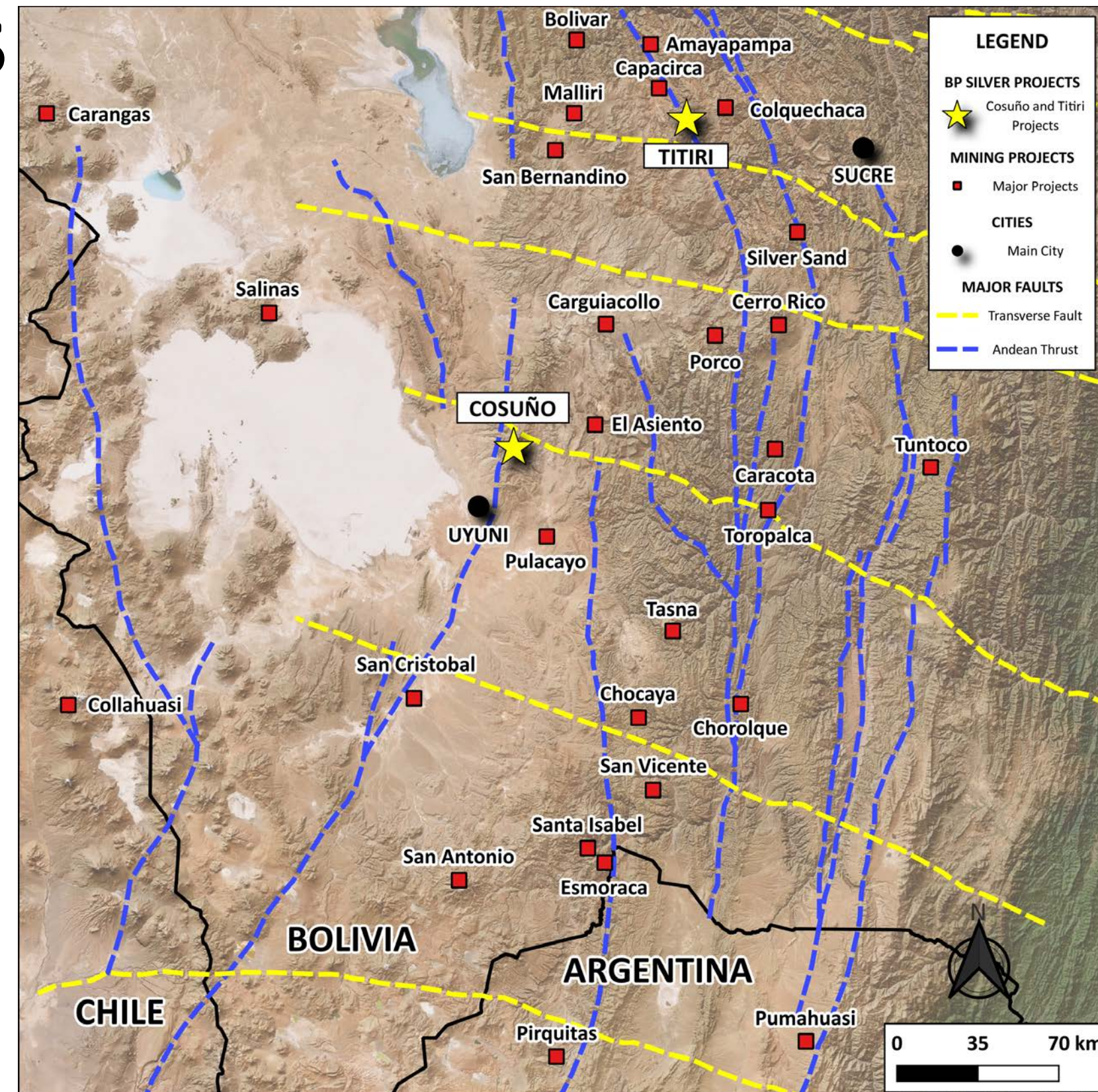
- Overlies a major Silver-Lead-Zinc vein
- Significant potential for a vein style or breccia style system underlying Cosuño

REGIONAL CONTEXT & PEER DEPOSITS

- ✓ Cosuño located in southeast portion of the Bolivian tin-silver belt
- ✓ Multiple major deposits and operating mines in the region, controlled by intersection of major structural architecture

Country	Mine	Owner / Operator	Total Silver (Moz)
Bolivia	Cerro Rico de Potosí	COMIBOL	3700
Bolivia	San Cristóbal	San Cristóbal Mining	706
Bolivia	Pulacayo	Silver Elephant Mining	640
Bolivia	Mallku Khota	COMIBOL	470
Bolivia	Iska Iska	Eloro Resources	298
Bolivia	Carangas	New Pacific Metals	253
Bolivia	San José de Oruro	COMIBOL	247
Bolivia	Silver Sands	New Pacific Metals	215
Argentina	Chinchilla (Jujuy)	SSR Mining	52
Bolivia	San Vicente	Pan American Silver	31
Argentina	Pirquitas (Jujuy)	SSR Mining	27

Major producing mines and deposits in the Bolivia-Argentina Tin-Silver Belt



Regional Structural Setting with selected major deposits and mines highlighted.

COSUÑO ALTERATION FOOTPRINT

- ✓ 3,375 hectare project
- ✓ 40km diameter volcanic complex with very large alteration footprint – larger and more evolved than the 600+ million-ounce Pulacayo Silver Mine
- ✓ Sampling defines mineralization in Lithocap – target near surface
- ✓ **Silica Lithocap Target**

Results (320 samples) from BP Silver rock sampling:

Silver mineralization in the Lithocap ranges up to 1035 g/t silver, including 48% of samples >30 g/t silver and 12% >100 g/t silver

